



**B-BBEE**  
COMMISSION

## **PRESENTATION ON STATE OF WOMEN ECONOMIC TRANSFORMATION**

**(Stats Based on National Status & B-BBEE  
Trends Reports)**



# Background

2

- ❑ B-BBEE Commission is established in terms of s13B of the B-BBEE Act.
- ❑ B-BBEE Commission operations commenced effectively on *01 April 2016* within **the dtic**.
- ❑ B-BBEE Commission is implementing both its compliance and enforcement strategies simultaneously, i.e. both education and awareness, and investigations.
- ❑ Part of its mandate as embedded in s13F, amongst others, is to receive and analyse B-BBEE compliance reports from organs of state, public entities and JSE listed entities and SETAs.

# Source of Data Collection

3

## ❑ Section 13G Reporting

- Who should Report: organs of state, public entities, SETAs and JSE listed entities.
- Documents Analysed: annual integrated reports, annual financial statements, B-BBEE certificates, B-BBEE compliance matrix and FORM B-BBEE 1 and 2.

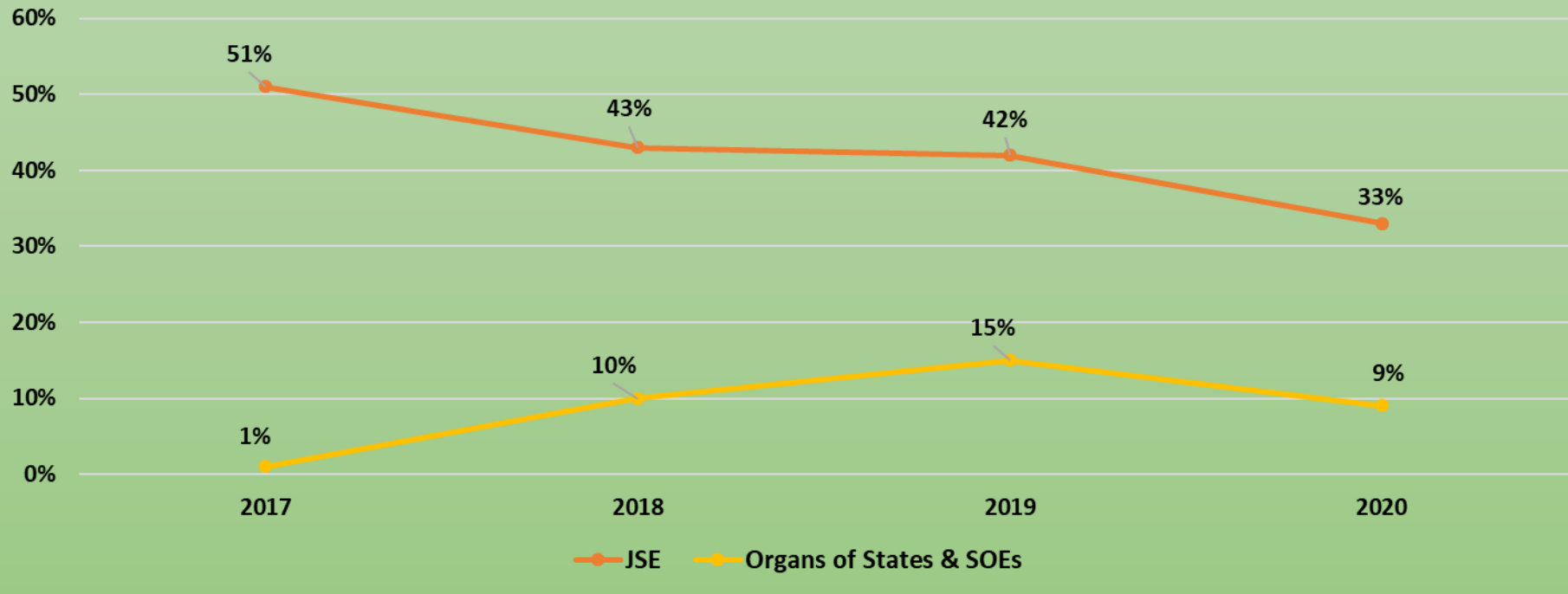
## ❑ B-BBEE Certificate Portal System

- Verification Agencies (VAs) capture B-BBEE certificate information as they issue them to entities.

# Stats on submissions

## Compliance Reports & Portal Information

Submitted Compliance Reports



Number of B-BBEE Certificates Captured into the Portal System

2017	2018	2019	2020
2 861	1 674	5 818	1 241
EME- 1 139, QSE- 851 & LARGE- 871	EME- 25, QSE- 588 & LARGE- 1 061	EME- 411, QSE- 2 057 & LARGE- 3 350	EME- 13, QSE- 338 & LARGE- 890

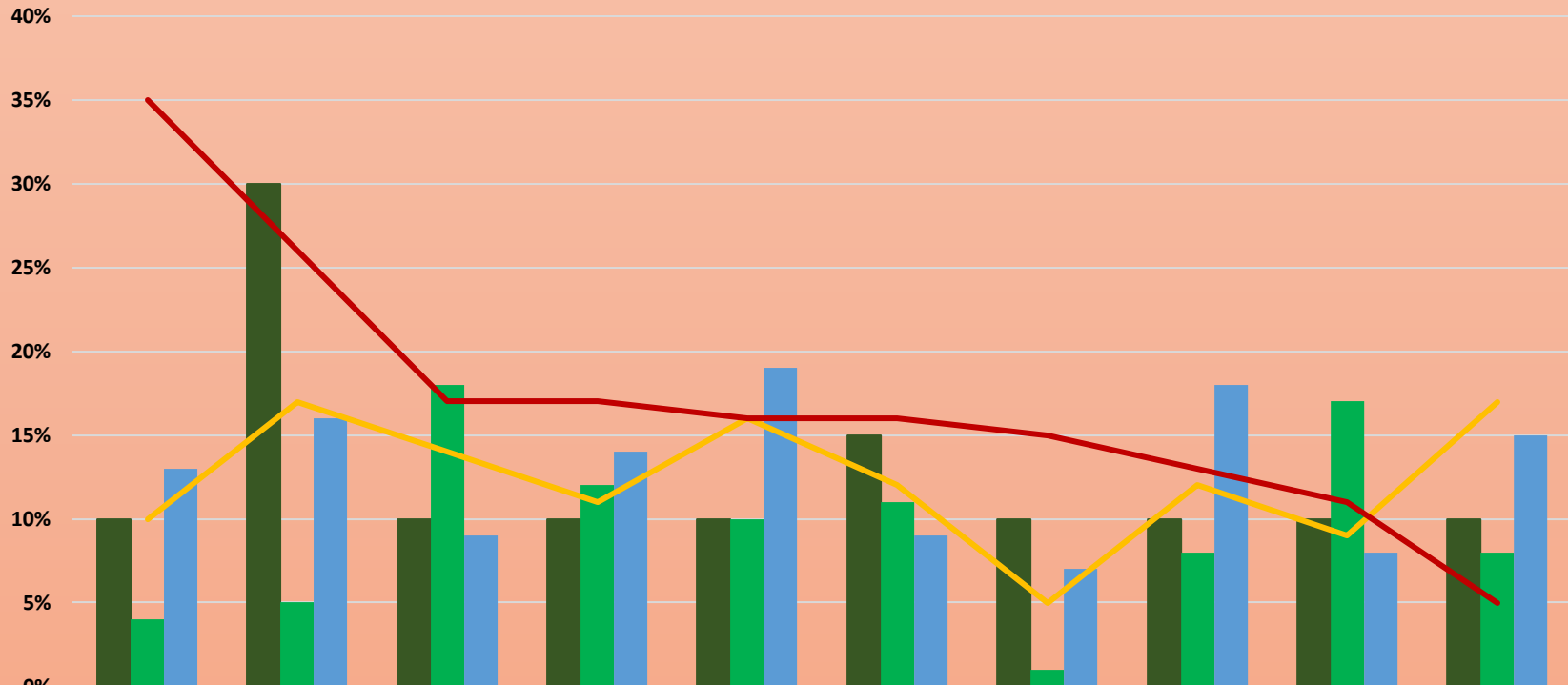
# Number of certificate per sector

SECTOR	LARGE	QSE	EME	Grand Total
Agri-BEE	24	8	0	32
Construction	28	28	12	68
Financial	28	4	0	32
Forestry	13	7	0	20
ICT	21	20	0	41
Integrated Transport	79	62	1	142
MAC	12	5	0	17
Property	7	6	0	13
Tourism	7	5	0	12
Specialised Score Card	10	11	0	21
Generic	661	182	0	843
<b>Grand Total</b>	<b>890</b>	<b>338</b>	<b>13</b>	<b>1241</b>

# B-BBEE Certificate Portal - Large Entities

## Av. Black Women Ownership Trends Per Sector

5

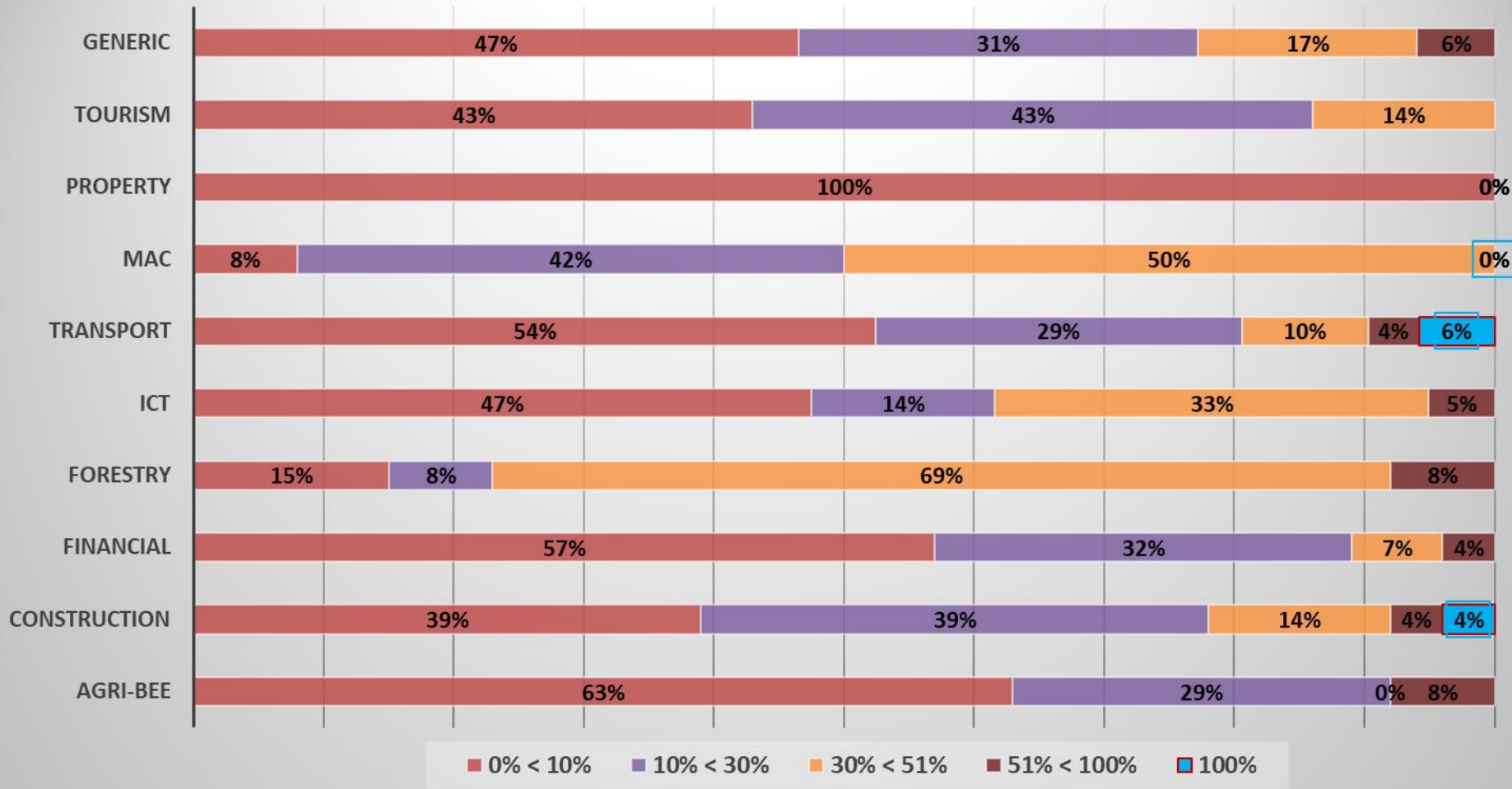


	Forestry	Construction	MAC	Generic	ICT	Transport	Agri-BEE	Tourism	Financial	Property
■ Sector Target	10%	30%	10%	10%	10%	15%	10%	10%	10%	10%
■ Achieved 2017	4%	5%	18%	12%	10%	11%	1%	8%	17%	8%
■ Achieved 2018	13%	16%	9%	14%	19%	9%	7%	18%	8%	15%
■ Achieved 2019	10%	17%	14%	11%	16%	12%	5%	12%	9%	17%
■ Achieved 2020	35%	26%	17%	17%	16%	16%	15%	13%	11%	5%

# B-BBEE Certificate Portal - Large Entities

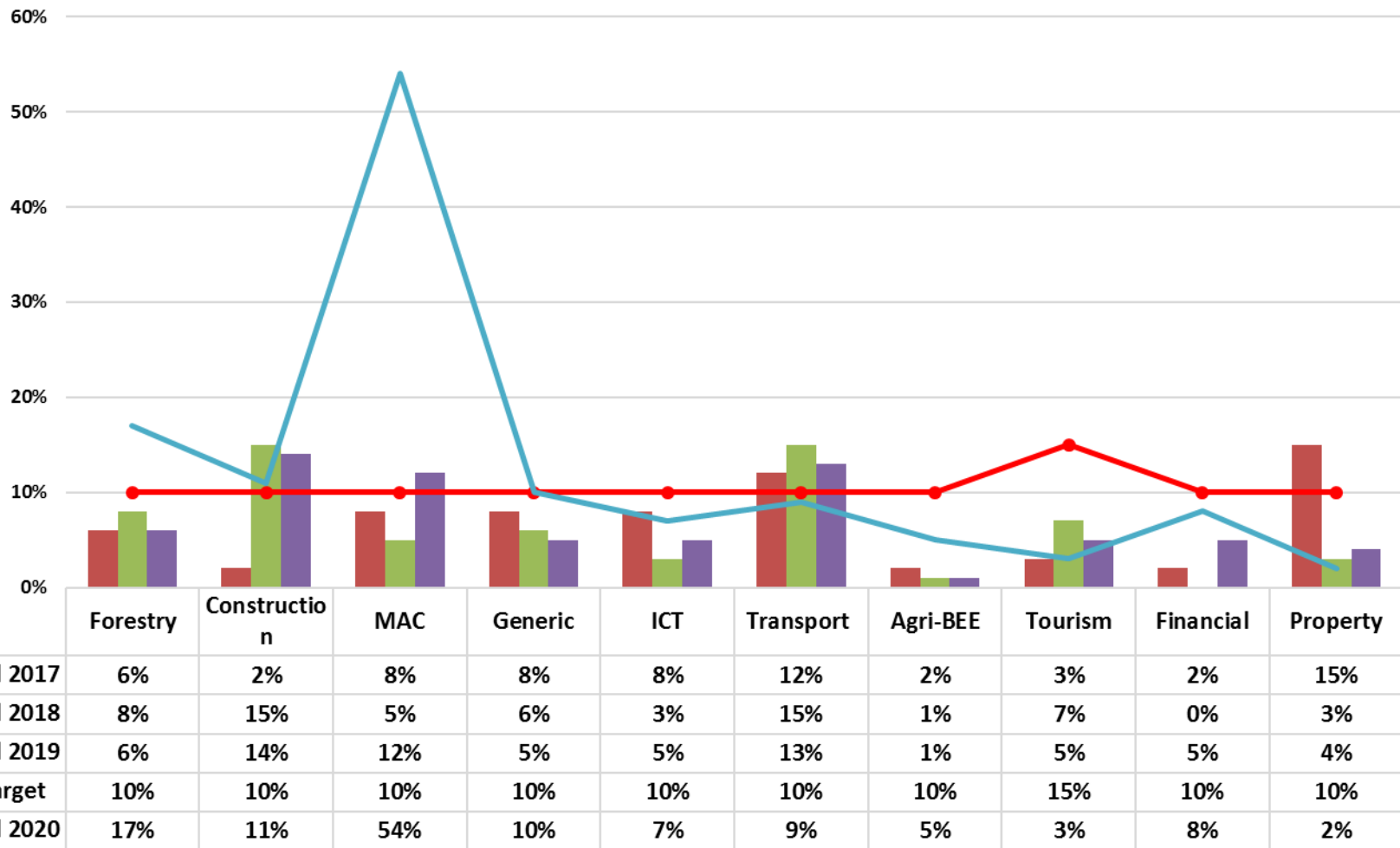
## 2020 Breakdown Black Women Ownership Per Sector

6



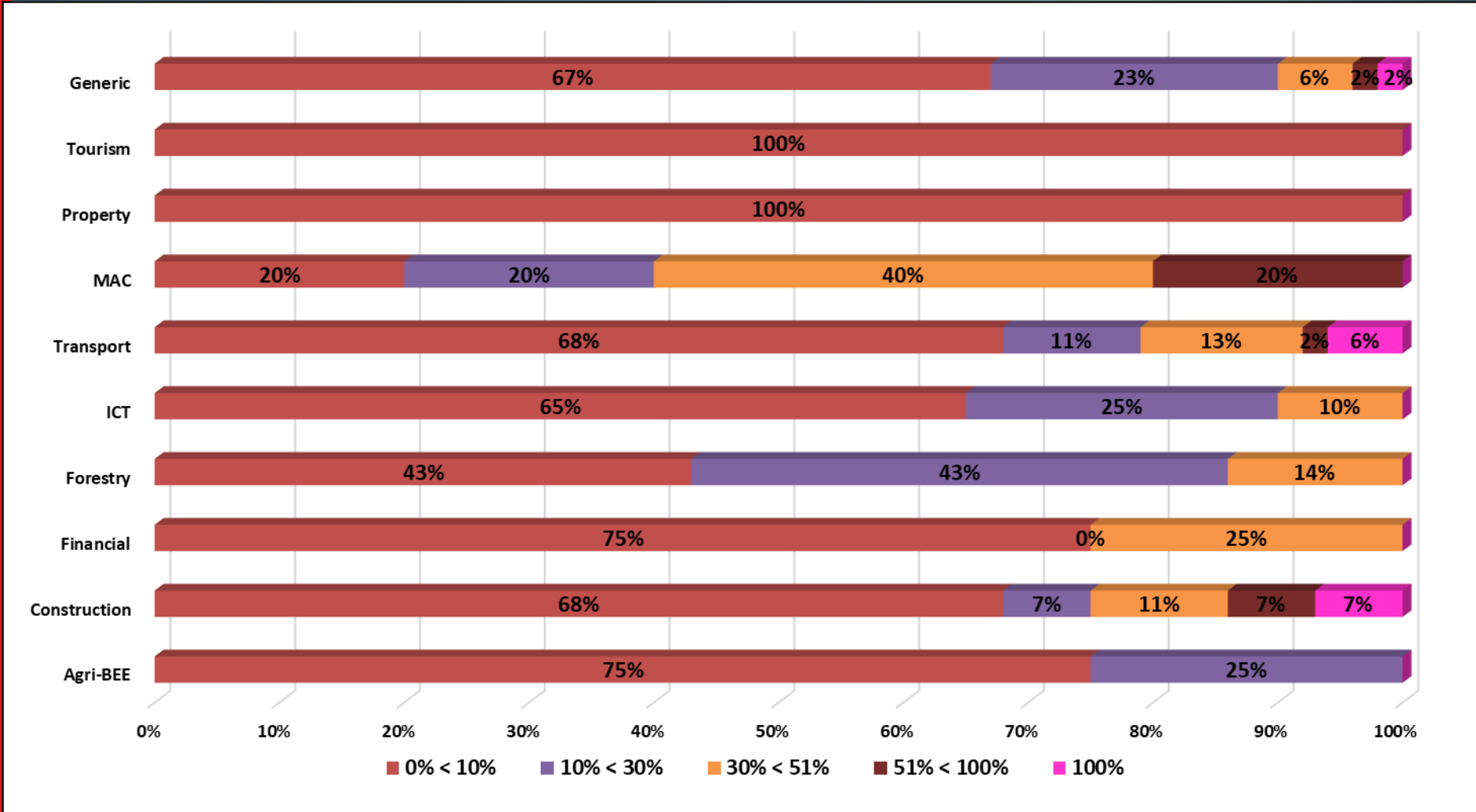
# B-BBEE Certificate Portal - QSEs

## Av. Black Women Ownership Trends Per Sector



# B-BBEE Certificate Portal - QSEs

## 2020 Breakdown Black Women Ownership Per Sector

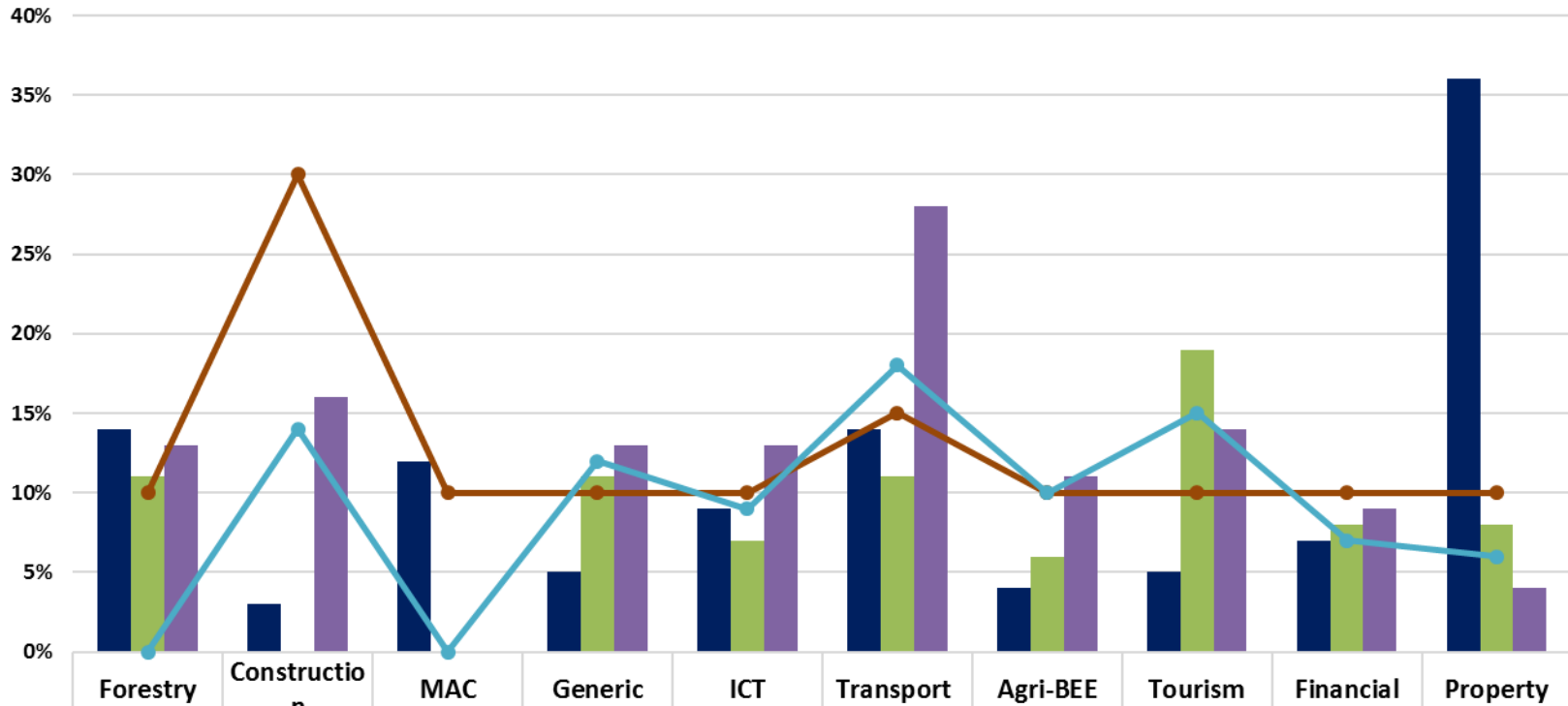


# SUBMITTED COMPLIANCE REPORTS

TYPE OF SECTOR	LARGE	QSE	EME	Grand Total
Agri-BEE	7	0	0	7
Construction	5	1	0	6
Financial	14	4	0	18
ICT	9	0	0	9
Property	9	0	0	9
Tourism	1	1	0	2
Integrated Transport	2	0	1	3
Forestry	0	0	0	0
MAC	0	0	0	0
Generic	41	7	3	51
Grand Total	88	13	4	105

# S13G Reporting - JSE Listed Entities

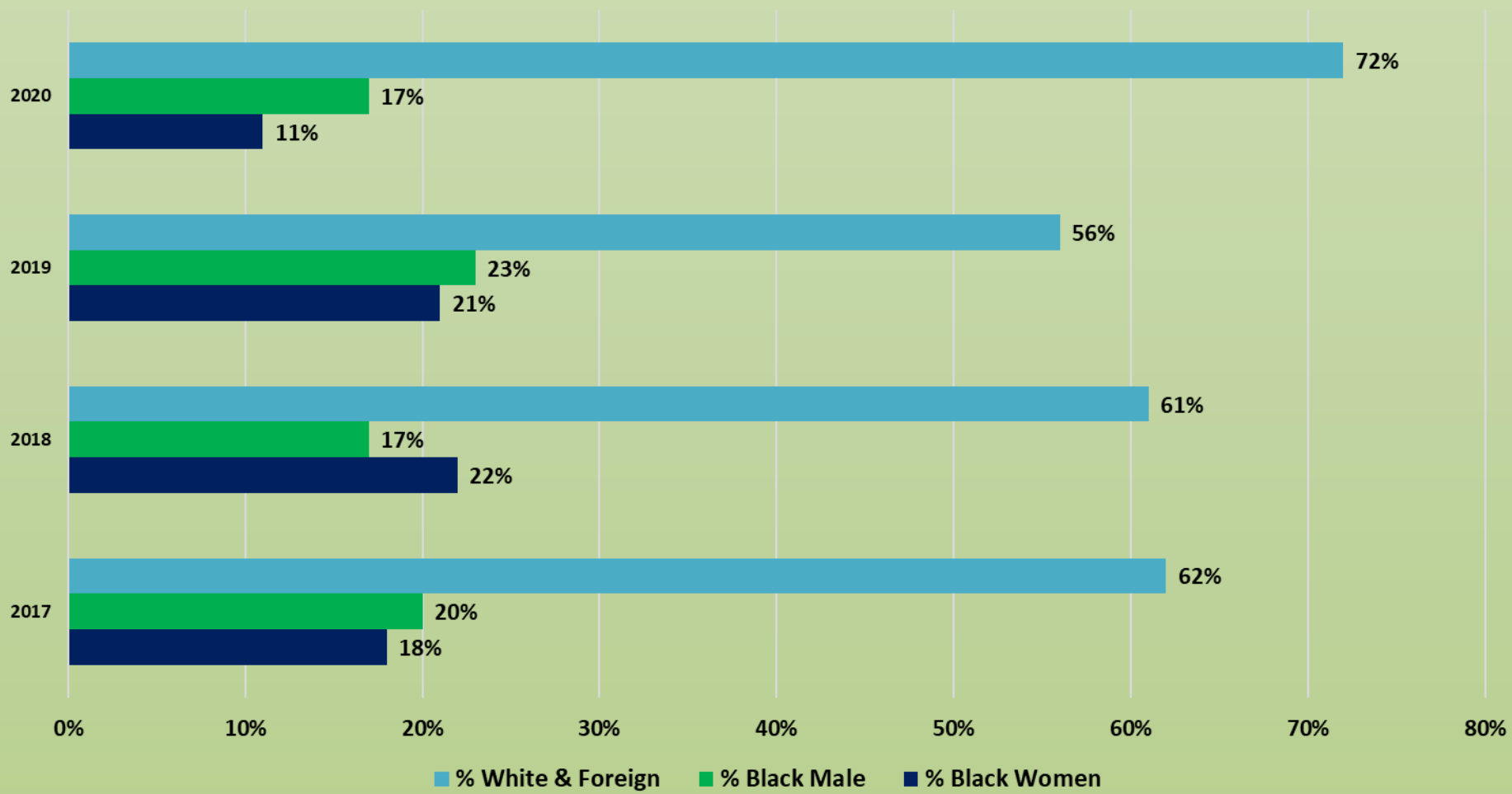
## Av. Black Women Ownership Trends Per Sector



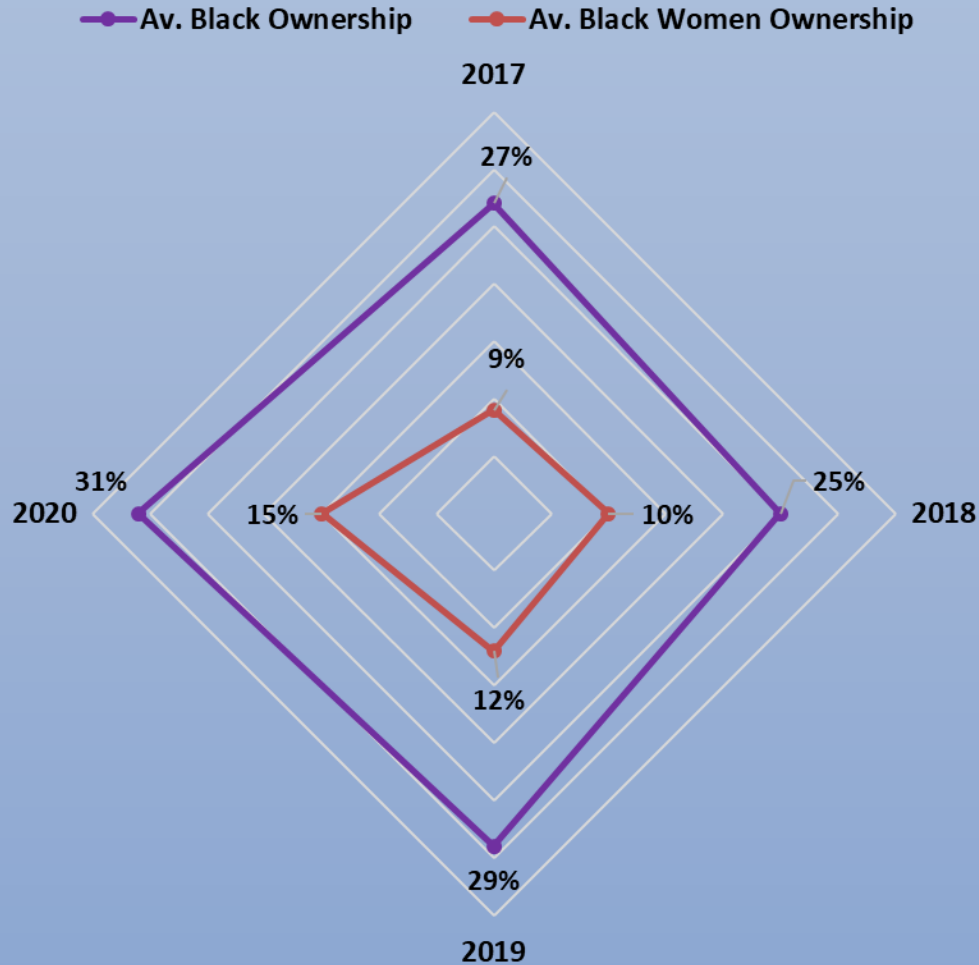
	Forestry	Construction	MAC	Generic	ICT	Transport	Agri-BEE	Tourism	Financial	Property
Achieved 2017	14%	3%	12%	5%	9%	14%	4%	5%	7%	36%
Achieved 2018	11%	0%	0%	11%	7%	11%	6%	19%	8%	8%
Achieved 2019	13%	16%	0%	13%	13%	28%	11%	14%	9%	4%
Sector Target	10%	30%	10%	10%	10%	15%	10%	10%	10%	10%
Achieved 2020	0%	14%	0%	12%	9%	18%	10%	15%	7%	6%

# S13G Reporting - JSE Listed Entities Trends Board Representation

10



# Trends Overall Black Ownership vs Black Women Ownership



# Observations

12

- ❑ Directorship positions for JSE Listed entities continue to be dominated by white people and foreign nationals followed by black males.
- ❑ JSE Listed Entities average black ownership has deteriorated across all sectors except for Property and Tourism sectors.
- ❑ However, overall (considering portal & s13G) there is a gradual increase in black women participation year-on-year.
- ❑ Of the received cases from April – July 2021, 30% of them were lodged by women and 40% of those relate to Ownership and Management Control.

# Contact Details

13

B-BBEE Commission  
77 Meintjies Street  
Sunnyside  
Pretoria  
0002

Telephone: +27 12 394 1535

Email: [mramare@beecommission.gov.za](mailto:mramare@beecommission.gov.za)

Website: [www.bbbeeecommission.co.za](http://www.bbbeeecommission.co.za)

**Thank You**

**“An Inclusive economy for all, together”**